

OLSOL

PERTEGAZ

# PERTEGAZ

Manuel Pertegaz (Olba 1917 - Barcelona 2014) ha sido considerado el modisto español de mayor trascendencia del s.XX junto con Balenciaga. Pertegaz definió la elegancia de la mujer durante décadas, una elegancia distinguida, un glamour sereno y delicado. Su concepto era el de una mujer cisne, frágil y majestuosa al mismo tiempo.

Pertegaz tenía una capacidad innata, solo al alcance de los grandes creadores, de convertir en clásico todo lo que tocaba, lo cual no deja de ser una manera de hacer perdurable la modernidad. Su influencia ha persistido hasta el siglo XXI, adaptándose a los cambios constantes en el mundo de la moda, aunque siempre manteniéndose fiel a su estilo. Pertegaz nunca quiso caer en el uniforme de la moda al que en ocasiones conducen las tendencias efímeras.

La disciplina, la constancia y la entereza estuvieron presentes en toda su carrera. Su motor creativo fue la obsesión por la búsqueda infinita de la perfección, la que nunca se alcanza, pero cuando se roza llena todo de significado.

*Manuel Pertegaz (Olba 1917-Barcelona 2014) has been considered the most important Spanish dressmaker of the twentieth century together with Balenciaga. Pertegaz defined the elegance of the woman for decades, a distinguished elegance, a serene and delicate glamour. His concept was a woman swan, fragile and majestic at the same time.*

*Pertegaz had an innate capacity, only within the reach of the great creators, to make classic everything he touched, which is a way to make modernity enduring. Its influence has persisted until the 21st century, adapting to the constant changes in the world of fashion, although always staying faithful to its style. Pertegaz never wanted to fall into the fashion uniform that sometimes leads to ephemeral tendencies.*

*The discipline, perseverance and fortitude were present throughout his career. His motor was the obsession with the infinite lookup of perfection, which is never reached, but when it rubs fills all of meaning.*

· Frida Kahlo ·

PZ

60040

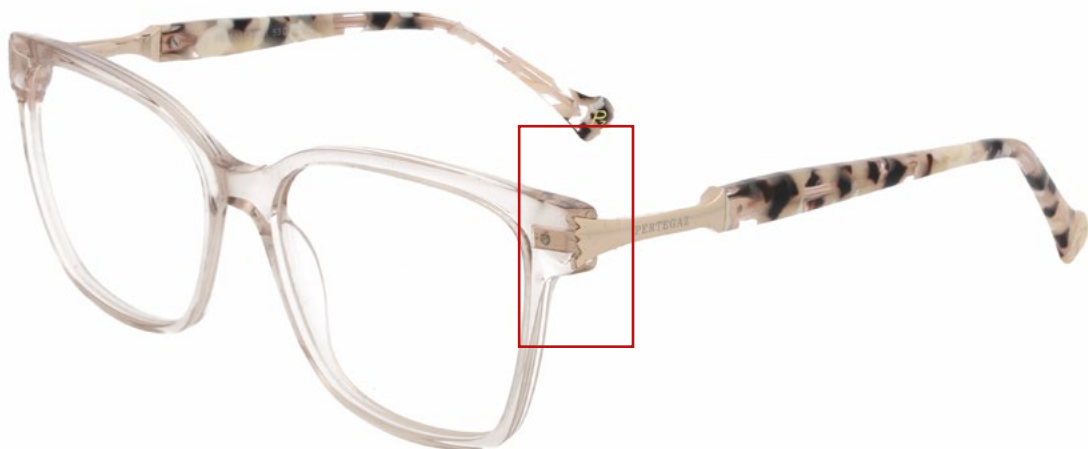
WOMAN  
METAL

○ | 53

⌋ | 16

— | 140

INSPIRACIÓN PARA LAS VARILLAS  
TEMPLE INSPIRATION



*Canasta con flores - 1941*



PZ

60040

WOMAN  
METAL

○ | 53

⌋ | 16

— | 140



511 *Shiny crystal*



512 *Shiny black*



540 *Blue havana*



550 *Violet havana*

PZ

60039

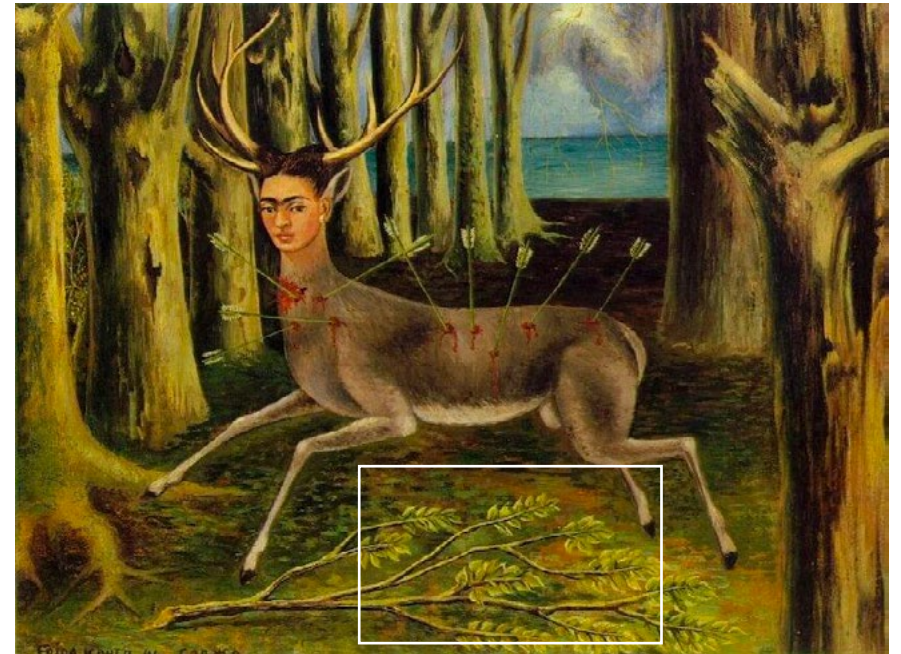
WOMAN  
ACETATO

○ | 54

⌒ | 17

— | 140

## INSPIRACIÓN PARA LAS VARILLAS TEMPLE INSPIRATION



*El venado herido - 1946*

PZ

60039

WOMAN  
ACETATO

○ | 54

⌋ | 17

— | 140



512 *Shiny black*



540 *Blue havana*



550 *Violet havana*



568 *Shiny salmon-pink*

PZ

60038

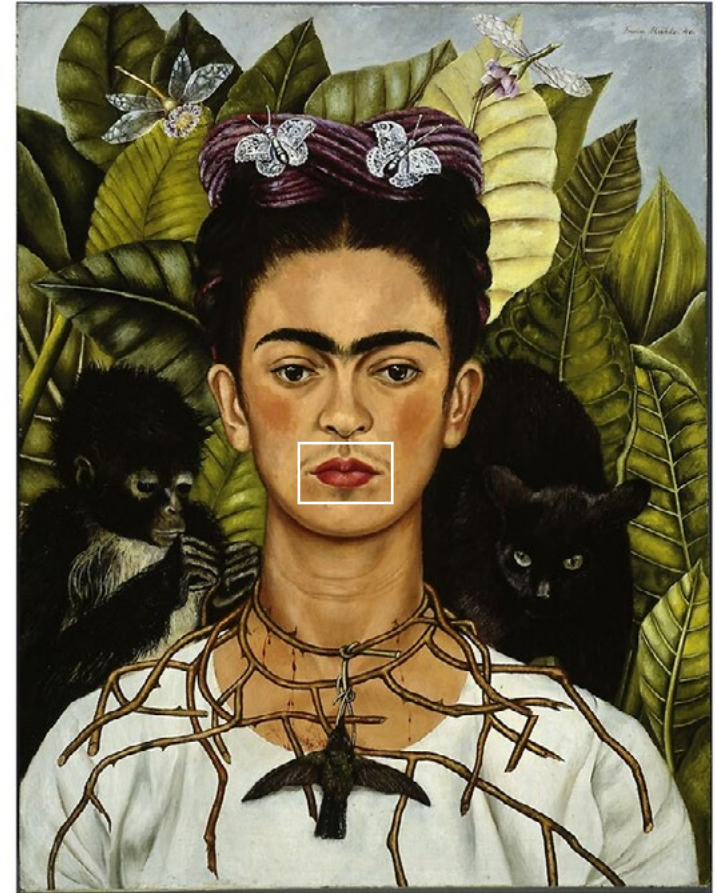
WOMAN  
METAL

○ | 53

⌋ | 18

— | 140

## INSPIRACIÓN PARA LAS VARILLAS TEMPLE INSPIRATION



*Autorretrato con collar de espinas y colibrí - 1940*



PZ

60038

WOMAN  
METAL

○ | 53

⌋ | 18

— | 140



100 *Shiny pink gold*



212 *Matt black*



244 *Matt dark blue*



265 *Matt pink*

PZ

60037

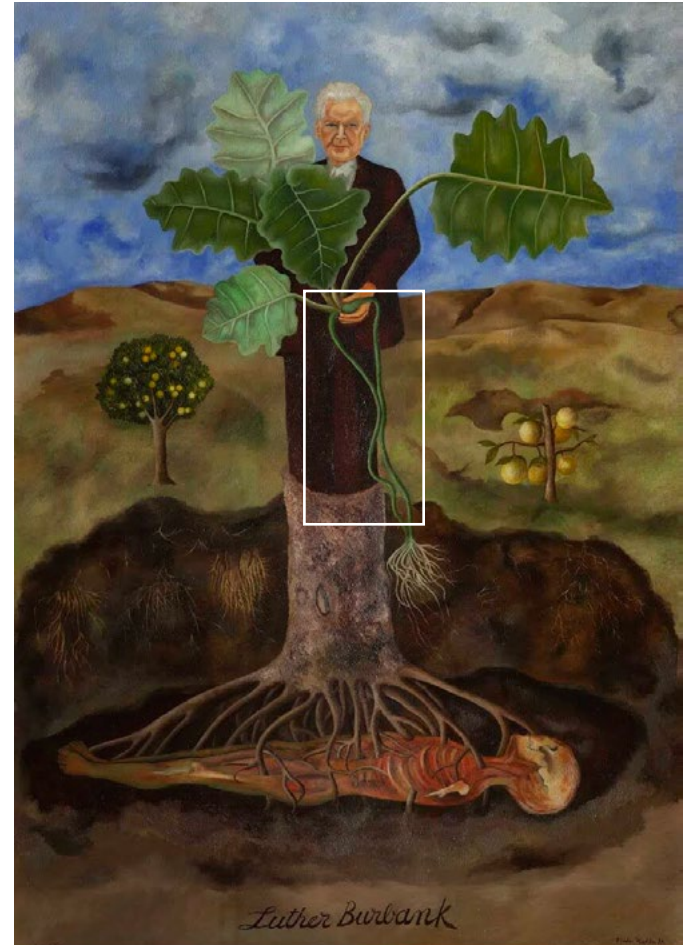
WOMAN  
ACETATO

○ | 54

⌋ | 16

— | 140

## INSPIRACIÓN PARA LAS VARILLAS TEMPLE INSPIRATION



Retrato de Luther Burbank - 1931

PZ

60037

WOMAN  
ACETATO

○ | 54

⌋ | 16

— | 140



512 *Shiny black*



540 *Blue havana*



560 *Pink havana*



565 *Shiny pink*

PZ

60035

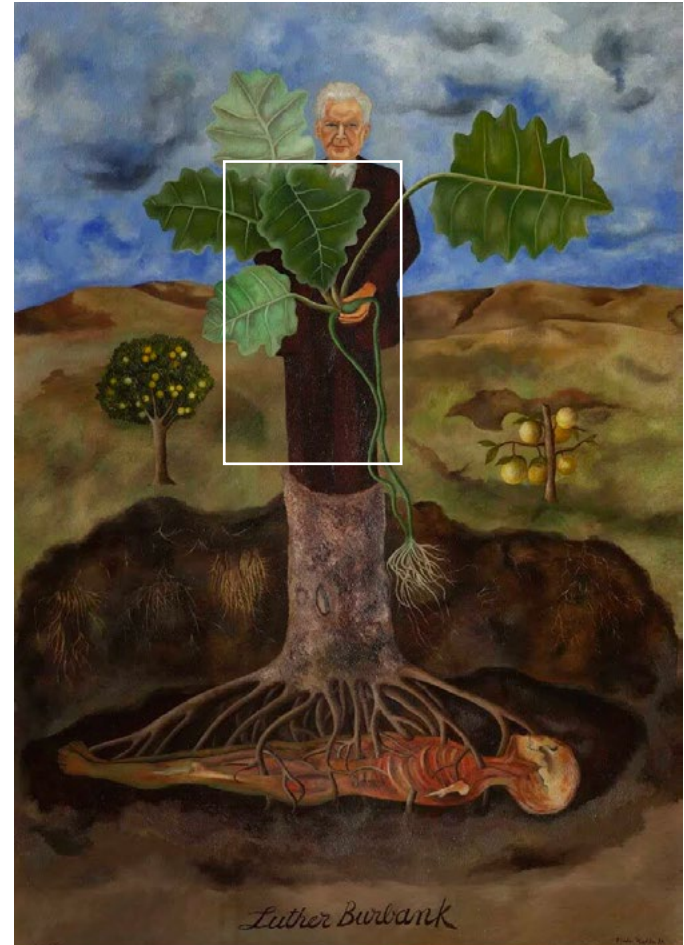
WOMAN  
ACETATO

○ | 54

⌒ | 16

— | 140

## INSPIRACIÓN PARA LAS VARILLAS TEMPLE INSPIRATION



Retrato de Luther Burbank - 1931



PZ

60035

WOMAN  
ACETATO

○ | 54

⌋ | 16

— | 140



511 *Shiny crystal*



512 *Shiny black*



535 *Shiny green*



565 *Shiny pink*

PZ

60034

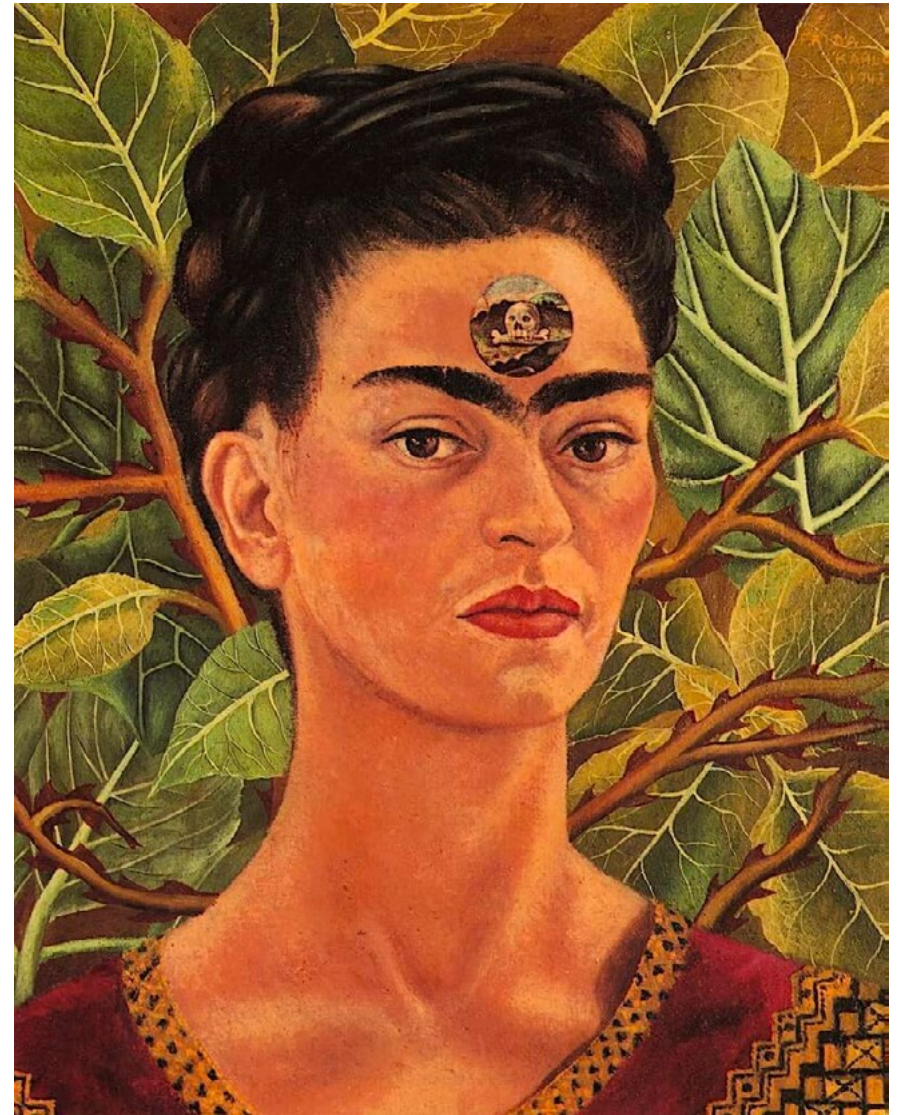
WOMAN  
ACETATO

○ | 53

⌋ | 18

— | 140

INSPIRACIÓN PARA LAS VARILLAS  
TEMPLE INSPIRATION



*Pensando en la muerte - 1943*

PZ

60034

WOMAN  
ACETATO

○ | 53

⌋ | 18

— | 140



101 *Shiny gold*



212 *Matt black*



231 *Matt aquamarine*



263 *Matt very dark pink*

PZ

60033

WOMAN  
ACETATO

○ | 55

⌒ | 16

— | 140

INSPIRACIÓN PARA LAS VARILLAS  
TEMPLE INSPIRATION



*Autorretrato con mono - 1940*



PZ

60033

WOMAN  
ACETATE

○ | 55

⌋ | 16

— | 140



512 *Shiny black*



543 *Shiny very dark blue*



566 *Shiny light pink*



572 *Shiny burdeaux*

PZ

60031

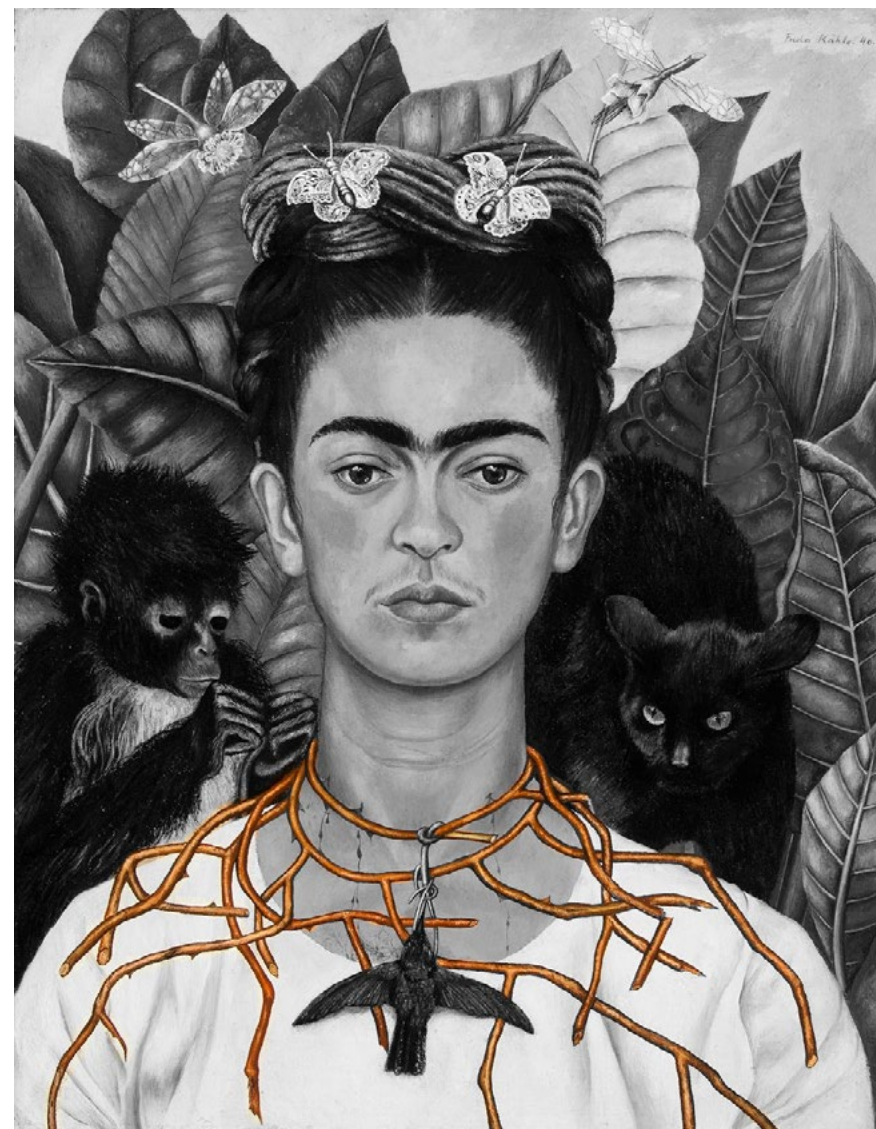
WOMAN  
ACETATO

○ | 52

⌋ | 16

— | 140

INSPIRACIÓN PARA LAS VARILLAS  
TEMPLE INSPIRATION



*Auto retrato con collar de espinas y colibrí - 1940*

PZ

60031

WOMAN  
ACETATO

○ | 52

⌋ | 16

— | 140



512 *Shiny black*



535 *Shiny green*



545 *Shiny blue*



555 *Shiny violet*



Joan Miró i Ferrà fue un pintor, escultor, grabador y ceramista español.

En sus obras reflejó su interés en el subconsciente, en lo «infantil» y en la cultura y tradiciones de Cataluña. Aunque se le asocia al arte abstracto por su estilo maduro de formas estilizadas e imaginarias, en su juventud se inició en la figuración, con fuertes influencias fauvistas, cubistas y expresionistas, pasando a una pintura plana con cierto aire naïf, como lo es su conocido cuadro La Masía del año 1920

Miró manifestó su deseo de abandonar los métodos convencionales de pintura, para poder favorecer una forma de expresión que fuese contemporánea, y no querer doblegarse a sus exigencias y a su estética ni siquiera con sus compromisos hacia los surrealistas.

*Joan Miró i Ferrà was a Spanish painter, sculptor, engraver and ceramicist.*

*In his works he reflected his interest in the subconscious, in the “childish” and in the culture and traditions of Catalonia. Although he is associated with abstract art due to his mature style of stylized and imaginary forms, in his youth he began in figuration, with strong fauvist, cubist and expressionist influences, moving on to flat painting with a certain naive air, as is his well-known painting La Masía from the year 1920*

*Miró expressed his desire to abandon the conventional methods of painting, in order to favor a form of expression that was contemporary, and not wanting to bend to their demands and aesthetics even with his commitments to the surrealists.*





PZ

60029

WOMAN  
ACETATO

○ | 51

⌋ | 17

— | 140

## INSPIRACIÓN PARA LAS VARILLAS TEMPLE INSPIRATION



Varillas inspiradas en  
*Signos y constelaciones enamorados de una WOMAN* -  
1939 - 1941



*Signos y constelaciones enamorados de una WOMAN* -  
1939 - 1941

PZ

60029

WOMAN  
ACETATO

○ | 51

⌋ | 17

— | 140



512 *Shiny black*



525 *Shiny brown*



557 *Shiny pale violet*



563 *Shiny very dark pink*

PZ

60027

WOMAN  
ACETATO

○ | 52

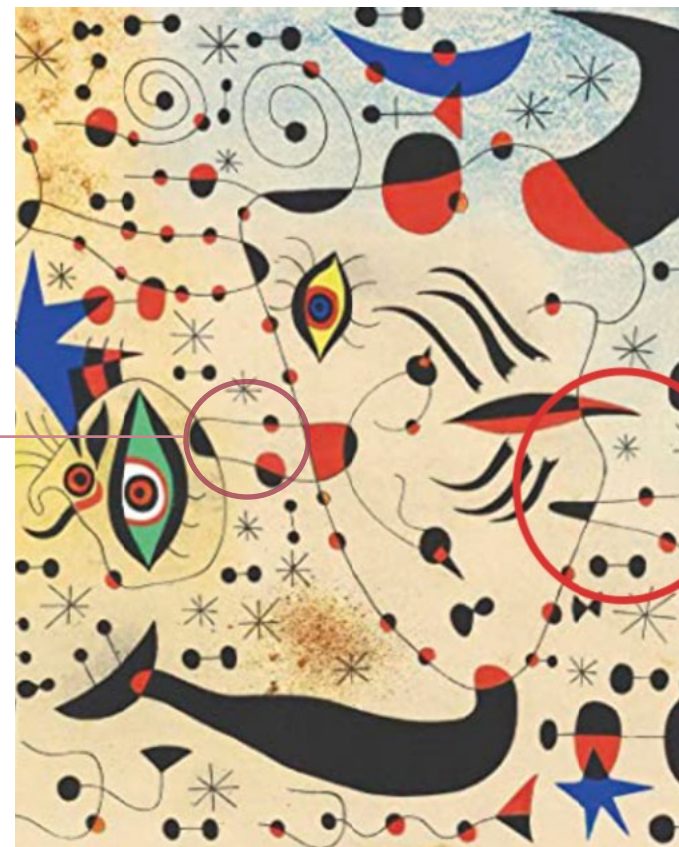
⌋ | 16

— | 140

## INSPIRACIÓN PARA LAS VARILLAS TEMPLE INSPIRATION



Varillas inspiradas en  
*Signos y constelaciones enamorados de una WOMAN* -  
1939 - 1941



*Signos y constelaciones enamorados de una WOMAN* -  
1939 - 1941

PZ

60027

WOMAN  
ACETATO

○ | 52

⌋ | 16

— | 140



512 *Shiny black*



545 *Shiny blue*



565 *Shiny pink*



567 *Shiny pale pink*



PZ

60026

WOMAN  
ACETATO

○ | 53

⌋ | 15

— | 140

## INSPIRACIÓN PARA LAS VARILLAS TEMPLE INSPIRATION



Varillas inspiradas en  
*Signos y constelaciones enamorados de una WOMAN* -  
1939 - 1941



*Signos y constelaciones enamorados de una WOMAN* -  
1939 - 1941

PZ

60026

WOMAN  
ACETATO

○ | 53

⌋ | 15

— | 140



512 *Shiny black*



531 *Shiny aquamarine*



550 *Violet havana*



567 *Pink havana*

PZ

60025

WOMAN  
METAL

○ | 52

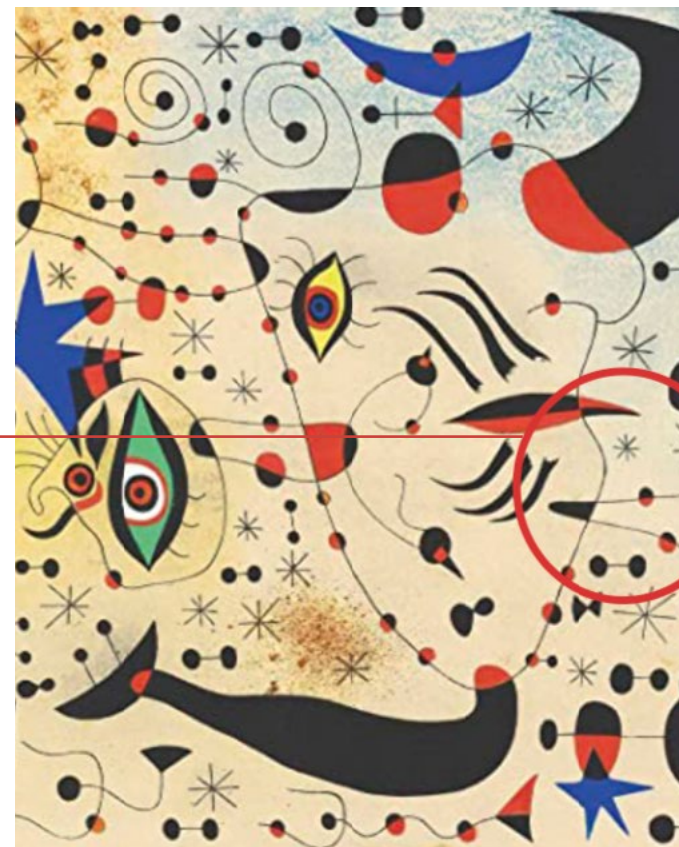
⌋ | 18

— | 140

## INSPIRACIÓN PARA LAS VARILLAS TEMPLE INSPIRATION



Varillas inspiradas en  
*Signos y constelaciones enamorados de una WOMAN* -  
1939 - 1941



*Signos y constelaciones enamorados de una WOMAN* -  
1939 - 1941

PZ

60025

WOMAN  
METAL



| 52



| 18



| 140



100 *Shiny pink gold*



101 *Shiny gold*



550 *Matt pink gold*



227 *Matt pale brown*



PZ

60024

WOMAN

METAL + ACETATE

○ | 54

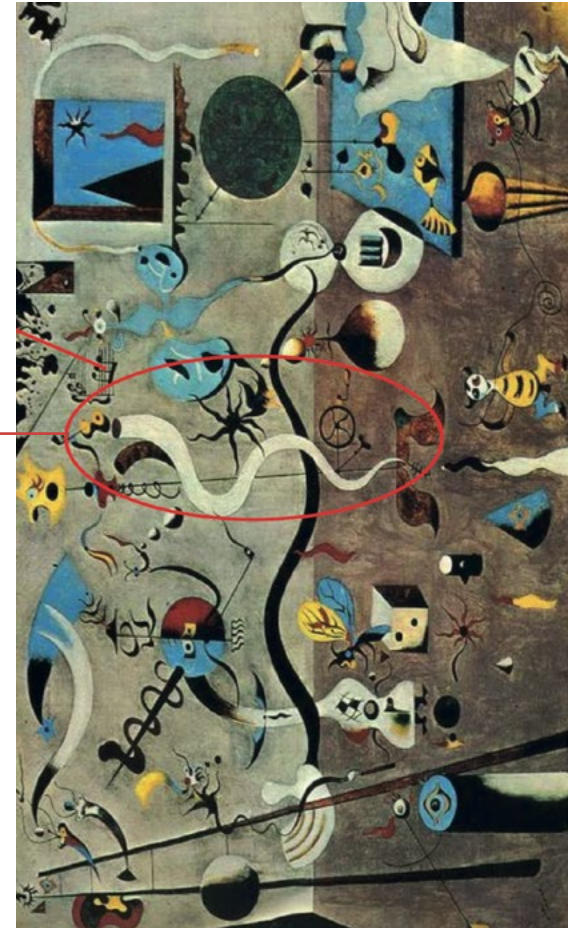
⌋ | 17

— | 140

## INSPIRACIÓN PARA LAS VARILLAS TEMPLE INSPIRATION



Varillas inspiradas en *El Carnaval del Arlequín* - 1925



PZ

60024

WOMAN

METAL + ACETATE

○ | 54

⌋ | 17

— | 140



513 *Shiny very dark grey*



522 *Shiny camel*



545 *Shiny blue*



552 *Shiny purple*

PZ

60023

WOMAN  
ACETATE

○ | 52

⌋ | 16

— | 140

## INSPIRACIÓN PARA LAS VARILLAS TEMPLE INSPIRATION



Varillas y frontales inspirados en  
*Signos y constelaciones enamorados de una WOMAN* -  
1939 - 1941



PZ

60023

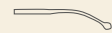
WOMAN  
ACETATE



52



16



140



512 *Shiny black*



531 *Shiny aquamarine*



550 *Violet havana*



566 *Shiny light pink*



# PERTEGAZ

· ATELIER ·

**PZ**

**55166**

**WOMAN**  
METAL

○ | 52

⌋ | 18

— | 140



**100 SHINY PINK GOLD**



**200 MATT PINK GOLD**



**212 MATT BLACK**



**221 MATT BEIGE**

PZ

55157

WOMAN  
ACETATE

○ | 53

⌋ | 17

— | 140



512 SHINY BLACK



540 BLUE HAVANA



546 SHINY LIGHT BLUE



568 SHINY SALMON-PINK

PZ

55156

WOMAN  
ACETATE

○ | 53

⌋ | 18

— | 140



512 SHINY BLACK



554 SHINY DARK VIOLET



566 SHINY LIGHT PINK



PZ

55155

WOMAN  
METAL

○ | 50

⌋ | 17

— | 135



100 SHINY PINK GOLD



212 MATT BLACK



255 MATT VIOLET



272 MATT BORDEAUX

PZ

55154

WOMAN  
ACETATE

○ | 53

⌋ | 15

— | 140



512 SHINY BLACK



535 SHINY GREEN



567 SHINY PALE PINK



570 RED HAVANA

PZ

55153

WOMAN  
METAL

○ | 53

⌋ | 19

— | 140



100 SHINY PINK GOLD



212 MATT BLACK



248 MATT TURQUOISE



253 MATT VERY DARK VIOLET

PZ

55152

WOMAN  
ACETATO

○ | 54

⌒ | 16

— | 140



512 SHINY BLACK



530 GREEN HAVANA



567 SHINY PALE PINK



553 SHINY VERY DARK VIOLET

PZ

55151

WOMAN  
ACETATO

○ | 53

⌋ | 16

— | 140



512 SHINY BLACK



513 SHINY VERY DARK GREY



567 SHINY PALE PINK



599 SHINY MULTICOLOR



PZ

55150

WOMAN  
ACETATO

○ | 54

⌒ | 16

— | 140



522 SHINY CAMEL



540 BLUE HAVANA



555 SHINY VIOLET



567 SHINY PALE PINK

PZ

55149

WOMAN  
ACETATO

○ | 55

⌋ | 16

— | 140



512 SHINY BLACK



513 SHINY VERY DARK GREY



527 SHINY PALE BROWN



566 SHINY LIGHT PINK

PZ

55148

WOMAN  
METAL

○ | 54

⌋ | 17

— | 140



212 MATT BLACK



221 MATT BEIGE



553 MATT VERY DARK VIOLET



272 MATT BORDEAUX

PZ

55147

WOMAN  
METAL

○ | 51

⌋ | 17

— | 145



101 SHINY GOLD



212 MATT BLACK



221 MATT BEIGE



272 MATT BURDEAUX

PZ

55146

WOMAN  
COMBINED

○ | 51

⌋ | 16

— | 145



512 SHINY BLACK



570 HAVANA ROJO



795 HAVANA



567 SHINY PALE PINK



PZ

55145

WOMAN  
COMBINED

○ | 53

⌋ | 16

— | 145



512 SHINY BLACK



533 SHINY VERY DARK GREEN



555 SHINY VIOLET



566 SHINY PINK

PZ

55144

WOMAN  
COMBINED

○ | 53

⌋ | 15

— | 145



512 SHINY BLACK



521 SHINY BEIGE



555 SHINY VIOLET



572 SHINY BURDEAUX

PZ

55143

WOMAN  
COMBINED

○ | 56

⌒ | 18

— | 140



100 SHINY PINK GOLD



101 SHINY GOLD



200 MATT PINK GOLD



201 MATT GOLD

PZ

55141

WOMAN  
COMBINED

○ | 54

⌋ | 17

— | 140



512 SHINY BLACK



524 SHINY DARK BROWN



531 SHINY AQUAMARINE



566 SHINY LIGHT PINK

PZ

55140

WOMAN  
ACETATE

○ | 53

⌋ | 17

— | 140



512 SHINY BLACK



30 GREEN HAVANA



570 RED HAVANA



585 SHINY ORANGE



PZ

55139

WOMAN  
COMBINED

○ | 53

⌋ | 16

— | 140



512 SHINY BLACK



553 SHINY VERY DARK GREEN



567 SHINY PALE PINK



572 SHINY BURDEAUX

PZ

55137

WOMAN  
COMBINED

○ | 54

⌒ | 18

— | 140



510 GREY HAVANA



512 SHINY BLACK



560 PINK HAVANA



572 SHINY BURDEAUX

PZ

55136

WOMAN  
COMBINED

○ | 54

⌋ | 18

— | 140



100 SHINY PINK GOLD



101 SHINY GOLD



200 PINK GOLD



212 MATT BLACK

PZ

55135

WOMAN  
ACETATO

○ | 51

⌋ | 17

— | 140



512 SHINY BLACK



545 SHINY BLUE



552 SHINY PURPLE



567 SHINY PALE PINK

PZ

55133

WOMAN  
METAL

○ | 54

⌋ | 18

— | 140



212 MATT BLACK



221 MATT BEIGE



231 MATT AQUAMARINE



272 MATT BURDEAUX



PZ

55132

WOMAN  
METAL

○ | 52

⌋ | 17

— | 140



100 SHINY PINK GOLD



101 PINK GOLD



201 MATT GOLD



263 MATT VERY DARK PINK

PZ

55129

WOMAN  
COMBINED

○ | 51

⌋ | 17

— | 140



512 SHINY BLACK



540 BLUE HAVANA



565 SHINY PINK



567 SHINY PALE PINK

PZ

55126

WOMAN  
ACETATO

○ | 52

⌋ | 16

— | 140



512 SHINY BLACK



530 GREEN HAVANA



565 SHINY PINK



566 SHINY LIGHT PINK

PZ

55115

WOMAN

ACETATE + METAL

○ | 53

⌋ | 17

— | 140



221 MATT BEIGE



253 MATT VERY DARK VIOLET



263 MATT VERY DARK PINK



272 MAT BURDEAUX



PERTEGAZ  
|—— Atarashi



# PERTEGAZ

## |—— Atarashi

*ATARASHI (From the Japanese: New)*

*A design based on the feminine forms of Japanese aesthetics. Using minimalist details we create an elegant and careful aesthetic with fine and subtle lines.*

*Other recognizable elements of Japanese artistic influence, like the Great Wave of Kanagawa (Hokusai), criticize beauty, as well as the sophistication of society in the country of the rising sun.*

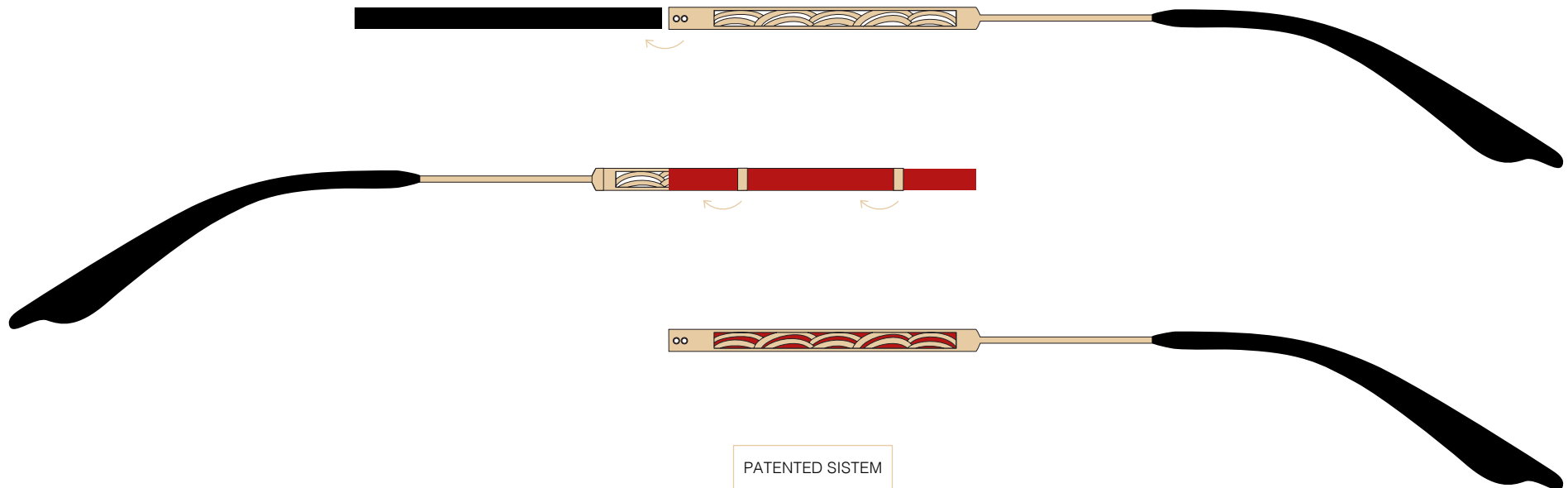


# PERTEGAZ

## |—— Atarashi

*This collection stands out for its interchangeable leather pieces of different colors on the rod, the “essence”, which combines with the metallic tone of the glasses. Only two colors by model.*

LEATHER PIECES



PZ

11011

WOMAN  
METAL

○ | 51

⌋ | 17

— | 145



101 SHINY GOLD



212 MATT BLACK



221 MATT BEIGE



272 MATT BURDEAUX

PZ

11008

WOMAN  
METAL

○ | 52

⌋ | 15

— | 145



512 SHINY BLACK



521 SHINY BEIGE



555 SHINY VIOLET



572 SHINY BORDEAUX

PZ

11007

WOMAN  
METAL

○ | 52

⌋ | 15

— | 145



512 SHINY BLACK



533 SHINY VERY DARK GREEN



554 SHINY DARK VIOLET



563 SHINY VERY DARK GREEN



PZ

11006

WOMAN  
METAL

○ | 51

⌋ | 17

— | 145



212 MATT BLACK



533 SHINY VERY DARK GREEN



253 MATT VERY DARK VIOLET



272 MATT BURGUNDY

PZ

11005

WOMAN  
METAL

○ | 53

⌋ | 16

— | 145



212 MATT BLACK



223 MATT VERY DARK BROWN



252 MATT PURPLE



272 MATT BURGUNDY

PZ

11004

WOMAN

ACETATE + METAL

○ | 55

⌋ | 16

— | 145



545 SHINY BLUE



526 SHINY LIGHT BROWN



525 SHINY BROWN



512 SHINY BLACK

PZ

11003

WOMAN  
METAL

○ | 50

⌒ | 18

— | 145



212 MATT BLACK



225 MATT BROWN



243 MATT DARK BLUE



272 MATT BORDEAUX

# PERTEGAZ

|———— Atarashi

*This collection is also accompanied by an elegant case whose design allows to adapt to the needs and preferences of each user.*





PERTEGAZ || TECH

· MAN ·

PZ

58095

MAN  
METAL

○ | 51

⌒ | 16

— | 145



203 MATT GUN



212 MATT BLACK



243 MATT VERY DARK BLUE



244 MATT DARK BLUE

PZ

58094

MAN  
METAL

○ | 52

⌒ | 17

— | 140



203 MATT GUN



212 MATT BLACK



243 MATT VERY DARK BLUE



245 MATT BLUE

PZ

58093

MAN  
METAL

○ | 55

⌋ | 18

— | 145



203 MATT GUN



212 MATT BLACK



243 MATT VERY DARK BLUE



245 MATT BLUE

PZ

58092

MAN  
ACETATE

○ | 58

⌋ | 19

— | 145



512 SHINY BLACK



517 SHINY LIGHT GREY



543 SHINY VERY DARK BLUE



545 SHINY BLUE



PZ

58091

MAN  
ACETATE

○ | 52

⌋ | 19

— | 145



515 SHINY GREY



543 SHINY VERY DARK BLUE



545 SHINY BLUE



612 MATT BLACK

PZ

58090

MAN  
ACETATE

○ | 56

⌋ | 16

— | 145



545 SHINY BLUE



512 SHINY BLACK



515 SHINY GREY



643 MATT VERY DARK BLUE

PZ

58089

MAN  
ACETATE

○ | 56

⌋ | 17

— | 145



511 SHINY CRYSTAL



512 SHINY BLACK



544 SHINY DARK BLUE



545 SHINY BLUE

PZ

58088

MAN  
ACETATE

○ | 52

⌒ | 18

— | 145



203 MATT GUN



212 MATT BACK



243 MATT VERY DARK BLUE



245 MATT BLUE

PZ

58087

MAN  
ACETATE

○ | 54

⌒ | 18

— | 145



203 MATT GUN



212 MATT BACK



243 MATT VERY DARK BLUE



245 MATT BLUE

PZ

58085

MAN  
ACETATE

○ | 54

⌋ | 19

— | 145



103 SHINY GUN



203 MATT GUN



212 MATT BLACK



243 MATT VERY DARK BLUE



PZ

58084

MAN  
METAL

○ | 56

⌒ | 18

— | 145



103 SHINY GUN



212 MATT BLACK



213 MATT VERY DARK GREY



243 MATT VERY DARK BLUE

PZ

58083

MAN  
ACETATE

○ | 51

⌋ | 17

— | 145



511 SHINY CRISTAL



512 SHINY BLACK



545 SHINY BLUE



643 MATT VERY DARK BLUE

PZ

58082

MAN  
ACETATE

○ | 54

⌋ | 18

— | 145



512 SHINY BLACK



517 SHINY LIGHT GREY



545 SHINY BLUE



643 MATT VERY DARK BLUE

PZ

58081

MAN  
ACETATE

○ | 56

⌋ | 17

— | 145



512 SHINY BLACK



515 SHINY GREY



545 SHINY BLUE



643 MATT VERY DARK BLUE

PZ

58080

MAN  
METAL

○ | 56

⌋ | 18

— | 140



103 SHINY GUN



201 MATT GOLD



203 MATT GUN



245 MATT VERY DARK BLUE

PZ

58079

MAN  
METAL

○ | 55

⌋ | 19

— | 140



203 MATT GUN



203 MATT VERY DARK BROWN



243 MATT VERY DARK BLUE



212 MATT BLACK



PZ

58078

MAN  
ACETATE

○ | 57

⌋ | 19

— | 140



512 SHINY BLACK



515 SHINY GREY



545 SHINY BLUE



544 SHINY DARK BLUE

PZ

58077

MAN  
ACETATE

○ | 57

⌋ | 17

— | 140



511 SHINY CRYSTAL



512 SHINY BLACK



544 SHINY DARK BLUE



545 SHINY VERY DARK BLUE

PZ

58076

MAN  
ACETATE

○ | 48

⌋ | 21

— | 145



511 SHINY CRYSTAL



512 SHINY BLACK



515 SHINY GREY



544 SHINY DARK BLUE

PZ

58075

MAN  
METAL

○ | 55

⌋ | 17

— | 145



203 MATT GUN



212 MATT BLACK



243 MATT VERY DARK BLUE



544 SHINY DARK BLUE

PZ

58073

MAN  
ACETATE

○ | 53

⌋ | 18

— | 145



511 SHINY CRYSTAL



12 SHINY BLACK



543 SHINY VERY DARK BLUE



545 SHINY BLUE

PZ

58072

MAN  
ACETATE

○ | 52

⌋ | 19

— | 145



512 SHINY BLACK



515 SHINY GREY



543 SHINY VERY DARK BLUE



545 SHINY BLUE



PZ

58071

MAN  
ACETATE

○ | 53

⌋ | 18

— | 145



512 SHINY BLACK



515 SHINY GREY



544 SHINY DARK BLUE



545 SHINY BLUE

PZ

58069

MAN  
ACETATE

○ | 55

⌋ | 18

— | 145



512 SHINY BLACK



513 SHINY VERY DARK GREY



515 SHINY GREY



545 SHINY BLUE

PZ

58068

MAN  
ACETATE

○ | 54

⌒ | 18

— | 145



512 SHINY BLACK



516 SHINY LIGHT GREY



533 SHINY VERY DARK GREEN



543 SHINY VERY DARK BLUE

PZ

58062

MAN  
COMBINED

○ | 52

⌋ | 18

— | 145



101 SHINY GOLD



103 SHINY GUN



212 MATT BLACK



243 MATT VERY DARK BLUE

PZ

58047

MAN  
ACETATO

○ | 50

⌒ | 21

— | 145



512 SHINY BLACK



513 SHINY VERY DARK GREY



514 SHINY DARK GREY



547 SHINY PALE BLUE

PZ

58042

MAN  
METAL

○ | 54

⌒ | 19

— | 145



203 MATT GUN



212 MATT BLACK



243 MATT VERY DARK BLUE



PZ

58040

MAN  
ACETATE

○ | 52

⌋ | 16

— | 145



512 SHINY BLACK



543 SHINY VERY DARK BLUE



544 SHINY DARK BLUE



545 SHINY BLUE

# PERTEGAZ

· WOMAN ·

**PZ**

**50168**

**WOMAN**  
METAL

○ | 53

⌋ | 16

— | 140



**212** MATT BLACK



**221** MATT BEIGE



**234** MATT DARK GREEN



**265** MATT PINK

PZ

50167

WOMAN  
METAL

○ | 56

⌋ | 17

— | 140



200 MATT PINK GOLD



212 MATT BLACK



221 MATT BEIGE



248 MATT TURQUOISE

PZ

50166

WOMAN  
ACETATE

○ | 56

⌋ | 17

— | 140



512 SHINY BLACK



531 SHINY AQUAMARINE



550 VIOLET HAVANA



567 SHINY PALE PINK

PZ

50165

WOMAN  
ACETATE

○ | 52

⌋ | 17

— | 140



512 SHINY BLACK



533 SHINY VERY DARK GREEN



554 SHINY DARK VIOLET



567 SHINY PALE PINK



PZ

50164

WOMAN  
ACETATE

○ | 53

⌒ | 16

— | 140



512 SHINY BLACK



531 SHINY AQUAMARINE



560 PINK HAVANA



567 SHINY PALE PINK

PZ

50163

MAN  
METAL

○ | 56

⌋ | 18

— | 145



203 MATT GUN



212 MATT BLACK



234 MATT DARK GREEN



244 MATT DARK BLUE

PZ

50162

MAN  
ACETATE

○ | 55

⌋ | 19

— | 145



510 GREY HAVANA



512 SHINY BLACK



516 SHINY LIGHT GREY



545 SHINY BLUE

PZ

50161

MAN  
ACETATE

○ | 56

⌋ | 18

— | 145



516 SHINY LIGHT GREY



540 BLUE HAVANA



594 SHINY DARK HAVANA



612 MATT BLACK

PZ

50159

MAN  
ACETATE

○ | 53

⌋ | 18

— | 145



511 SHINY CRYSTAL



512 SHINY BLACK



543 SHINY VERY DARK BLUE



545 SHINY BLUE

PZ

50158

MAN  
METAL

○ | 52

⌋ | 18

— | 140



100 SHINY PINK GOLD



101 SHINY GOLD



212 MATT BLACK



263 MATT VERY DARK PINK



PZ

50154

WOMAN  
TITANIUM

○ | 53

⌋ | 18

— | 140



100 SHINY PINK GOLD



101 SHINY GOLD



200 MATT PINK GOLD



201 MATT GOLD

PZ

50153

WOMAN  
TITANIUM

○ | 52

⌋ | 19

— | 140



100 SHINY PINK GOLD



101 SHINY GOLD



200 MATT PINK GOLD



201 MATT GOLD

PZ

50146

WOMAN  
ACETATAE

○ | 53

⌋ | 17

— | 140



523 SHINY VERY DARK BROWN



533 SHINY VERY DARK GREEN



563 SHINY VERY DARK PINK



572 SHINY BURDEAUX

PZ

50145

WOMAN  
ACETATAE

○ | 54

⌒ | 17

— | 140



510 GREY HAVANA



512 SHINY BLACK



527 SHINY PALE BROWN



557 SHINY PALE VIOLET

PZ

50143

WOMAN  
ACETATE

○ | 53

⌋ | 18

— | 140



512 SHINY BLACK



555 SHINY VIOLET



560 PINK HAVANA



565 SHINY PINK

PZ

50137

WOMAN

METAL + ACETATE

○ | 52

⌋ | 17

— | 140



100 SHINY PINK GOLD



101 SHINY GOLD



212 MATT BLACK



255 MATT VIOLET

PZ

50135

WOMAN  
ACETATE

○ | 53

⌋ | 17

— | 140



512 SHINY GOLD



552 SHINY PURPLE



563 SHINY VERY DARK PINK



567 SHINY PALE PINK



PZ

50134

WOMAN  
ACETATE

○ | 52

⌒ | 17

— | 140



512 SHINY GOLD



555 SHINY VIOLET



565 SHINY PINK



599 SHINY MULTICOLOR

PZ

50128

WOMAN

METAL + ACETATE

○ | 53

⌋ | 17

— | 140



100 SHINY PINK GOLD



100 SHINY GOLD



200 MATT PINK GOLD



201 MATT GOLD

PZ

50120

WOMAN

METAL + ACETATE

○ | 50

⌋ | 17

— | 140



212 MATT BLACK



243 MATT VERY DARK BLUE



253 MATT VERY DARK VIOLET



263 MATT VERY DARK PINK

PZ

50110

WOMAN  
METALE

○ | 53

⌋ | 16

— | 140



212 MATT BLACK



253 MATT VERY DARK VIOLET



263 MATT VERY DARK PINK



274 MATT DARK RED

PERTEGAZ  
· MAN ·

PZ

50160

WOMAN  
ACETATE

○ | 56

⌋ | 18

— | 145



512 SHINY BLACK



514 SHINY DARK GREY



516 SHINY LIGHT GREY



543 SHINY VERY DARK BLUE

PZ

50157

MAN  
ACETATE

○ | 53

⌋ | 15

— | 145



515 SHINY GREY



543 SHINY VERY DARK BLUE



544 SHINY DARK BLUE



574 SHINY DARK RED



PZ

50156

MAN  
ACETATE

○ | 53

⌋ | 15

— | 145



514 SHINY DARK GREY



530 GREEN HAVANA



531 SHINY AQUAMARINE



540 BLUE HAVANA

PZ

50155

MAN  
ACETATE

○ | 53

⌒ | 15

— | 145



515 SHINY GREY



514 SHINY DARK GREY



543 SHINY VERY DARK BLUE



544 SHINY DARK BLUE

PZ

50151

MAN  
ACETATE

○ | 53

⌋ | 15

— | 145



511 SHINY CRYSTAL



512 SHINY BLACK



515 SHINY GREY



544 SHINY DARK BLUE

PZ

50150

MAN  
ACETATE

○ | 53

⌋ | 19

— | 145



511 SHINY CRYSTAL



512 SHINY BLACK



513 SHINY VERY DARK GREY



543 SHINY VERY DARK BLUE

PZ

50149

MAN  
METAL

○ | 54

⌋ | 17

— | 145



103 SHINY GUN



203 MATT GUN



212 MATT BLACK



243 MATT VERY DARK BLUE

PZ

50148

MAN  
ACETATE

○ | 53

⌋ | 15

— | 145



512 SHINY BLACK



514 SHINY DARK GREY



543 SHINY VERY DARK BLUE



544 SHINY DARK BLUE

PZ

50147

MAN  
ACETATE

○ | 48

⌋ | 18

— | 145



512 SHINY BLACK



525 SHINY BROWN



544 SHINY DARK BLUE



545 SHINY BLUE



PZ

50132

MAN  
ACETATE

○ | 50

⌋ | 19

— | 145



512 SHINY BLACK



515 SHINY GREY



545 SHINY BLUE



593 SHINY VERY DARK HAVANA

PZ

50130

MAN

METAL + ACETATE

○ | 52

⌋ | 18

— | 145



101 SHINY GOLD



103 SHINY GUN



203 MATT GUN



212 MATT BLACK

PZ

50129

MAN  
METAL + ACETATE

○ | 52

⌋ | 18

— | 145



101 SHINY GOLD



103 SHINY GUN



203 MATT GUN



244 SHINY VERY DARK BLUE

PZ

50104

MAN

METAL + ACETATE

○ | 56

⌋ | 20

— | 145



103 SHINY GUN



201 MATT GOLD



102 SHINY SILVER



101 SHINY GOLD

PZ

50103

MAN  
METAL

○ | 57

⌋ | 18

— | 145



101 SHINY GOLD



102 SHINY SILVER



103 SHINY GUN



212 MATT BLACK

# PERTEGAZ

PUBLICIDAD

1



2



1. Expositor.  
Ref. **PZ233**

2. Poster doble cara 70x100 cm.  
Ref. **PZ216**



2



3



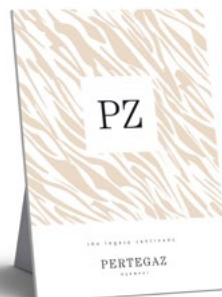
4



5



6



2. Showcard 240x29 cm  
Ref. **PZ218**

3. Showcard 29x20 cm  
Ref. **PZ219**

4. Showcard 40x29 cm  
Ref. **PZ220**

5. Showcard 29x40 cm  
Ref. **PZ221**

6. Showcard 15x21 cm  
Ref. **PZ222**

# Estuches



## CASES PZ

1 Estuche plegable

Medidas estuche montado: 16 x 6 x 4,5 cm

Medidas estuche plegado: 16 x 6 cm



## ESTUCHE PZ ATV

1 Estuche plegable

Medidas estuche montado: 16 x 6 x 4,5 cm

Medidas estuche plegado: 16 x 6 cm



## ESTUCHE PZ TECH

1 Estuche plegable

Medidas estuche montado: 16 x 6 x 4,5 cm

Medidas estuche plegado: 16 x 6 cm



## ESTUCHE PZ GALLERIE

1 Estuche plegable + gamuza + Caja

Medidas estuche montado: 16 x 6 x 4,5 cm

Medidas estuche plegado: 16 x 6 cm

OLSOL

C/Espigolera, 13  
08960, Sant Just Desvern (Barcelona)

---

[acriado@olsol.com](mailto:acriado@olsol.com)  
+34 93 480 99 80